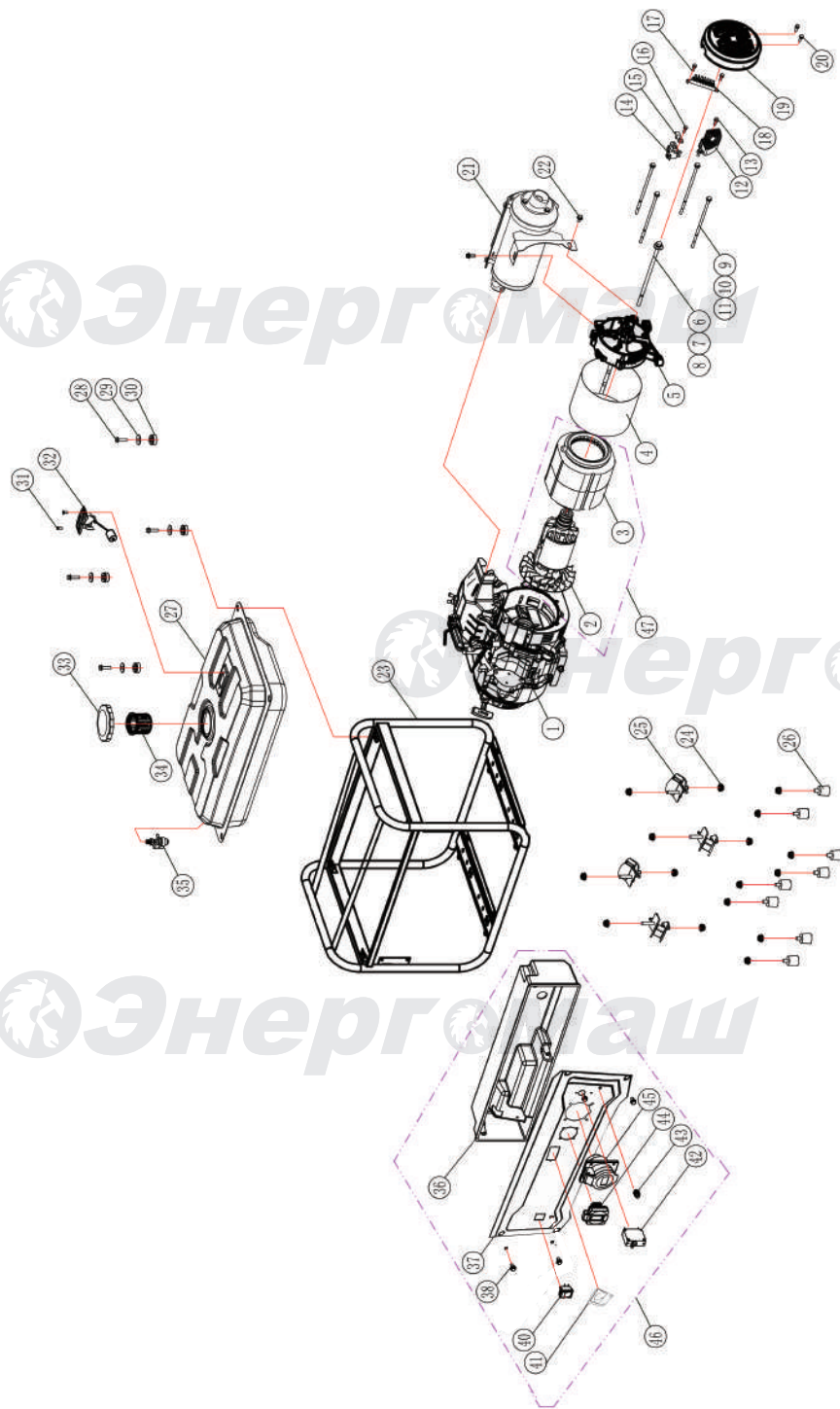


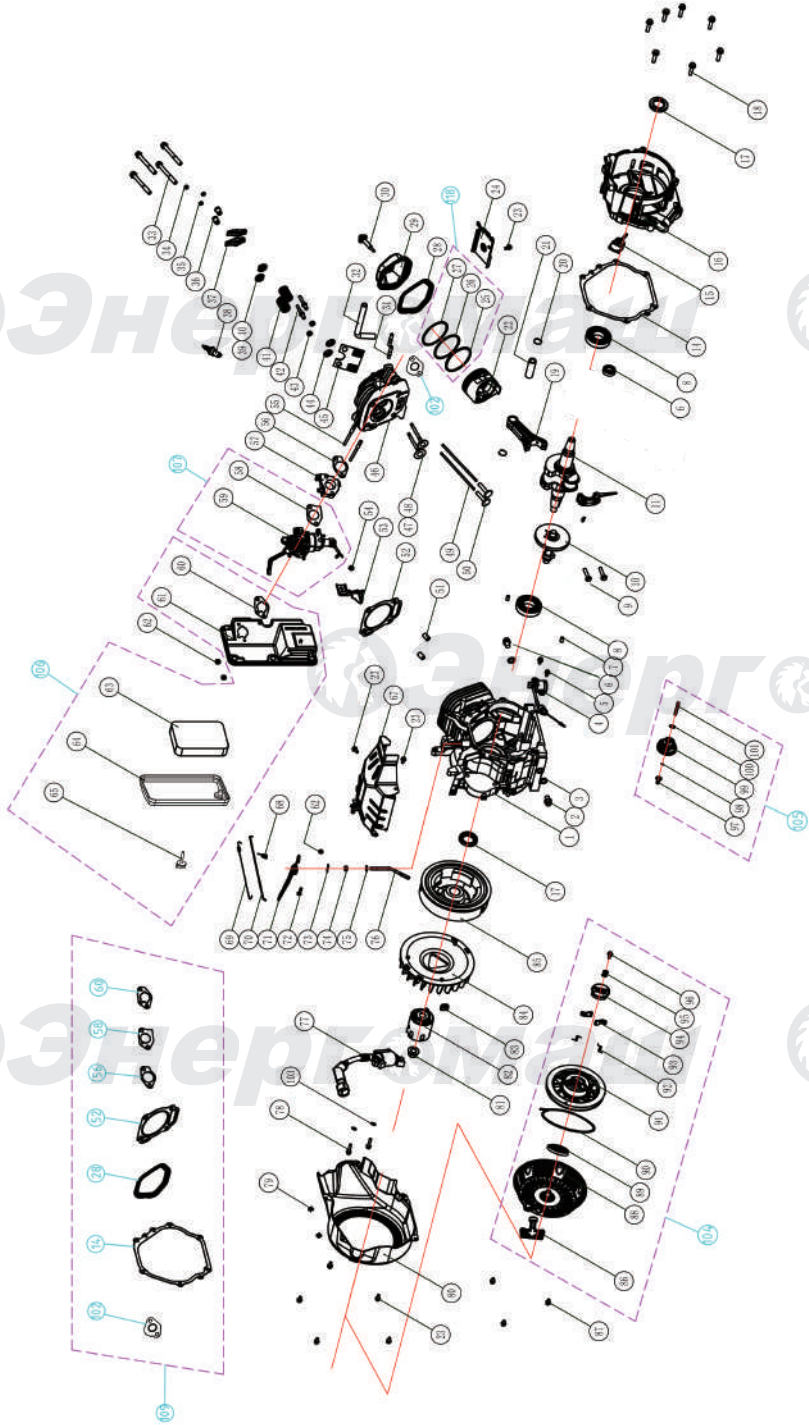
## БГ-6600

NO.	DESCRIPTION	SPEC.	NO.	DESCRIPTION	SPEC.
1	Engine subassembly		24	NUT M8	M8
2	Rotor Assy		25	Isolator 1	
3	Stator Assy		26	Isolator 2	
4	Generator Cover		27	Fuel Tank	
5	Generator end cover		28	FLG. BOLT M6x20	M6x20mm
6	Flange Bolt M10	M10	29	WASHER TANK Buffer	
7	Lock WASHER $\phi$ 10	$\Phi$ 10mm	30	OIOMETT, FUEL TANK	
8	FLAT WASHER $\phi$ 10	$\Phi$ 10mm	31	SCREW M5x10	M5x10mm
9	Flange Bolt M6	M6	32	FUEL GAUGE ASSY.	
10	Lock WASHER $\phi$ 6	$\Phi$ 6mm	33	FUEL CAP	
11	FLAT WASHER $\phi$ 6	$\Phi$ 6mm	34	FUEL FILTER, WIRE MESH	
12	AVR		35	FUEL VALVE	
13	FLG.BOLTM5x16	M5x16mm	36	CONTROL BOX	
14	Carbon brush assembly		37	CONTROL PANEL	
15	Carbon brush holder		38	FLG BOLT M6x 12	M6x12mm
16	BOLT & WASHER ASSEMBLIES		40	ENGINE SWITCH	
17	BOLT & WASHER ASSEMBLIES		41	Cover 1	
18	Terminal Block		42	AC Circuit Breaker 24.8A	
19	Generator end cover cap		43	Ground Bolt Assy	
20	FLG.BOLT M5x12	M5x12mm	44	Receptacle 16A	
21	Muffler assembly		45	Receptacle 32A	
22	FLG. BOLT M8x20	M8x20mm	46	CONTROL PANEL ASSY	
23	FRAME		47	Motor Assy	

БГ-6600-EX-20200902



# ENGINE FOR БГ-6600



NO.	DESCRIPTION	SPEC.	NO.	DESCRIPTION	SPEC.
1	CRANKCASE SUBASSEMBLY.		56	GSKT.,INSULATOR	
2	BOLT, DRAIN PLUG		57	PLATE, CARBURETOR INSULATOR	
3	WASHER DRAIN BOLT		58	GASKET, CARBURETOR	
4	SENSOR, ENGINE OIL		59	CARBURETOR	
5	FLG.BOLTM6X15	M6x15mm	60	GASKET, AIR CLEANER	
6	BOLT,DRAIN PLUG		61	ELBOW, AIR CLEANER	
7	Locatmg Pins		62	NUT M6	M6
8	Bearing		63	ELEMENT, AIR CLEANER	
9	Connect Rod Screw		64	COVER, AIR CLEANER	
10	CAMSHAFT ASSY.		65	Bolt, COVER, AIR CLEANER	
11	CRANKSHAFT		67	WIND GUIDE, TOP	
14	GASKET, CRANKCASE		68	SPRING,GOVERNOR	
15	OIL DIPSTICK ASSY		69	SPRING, THROTTLE VALVE RETURNING	
16	COVERCRANKCASE		70	ROD, GOVERNOR	
17	SEAL, OIL		71	ARM, GOVERNOR	
18	FLG.BOLTM8X40	M8x40mm	72	BOLT,GOVERNOR ARM	
19	ROD, CONNECTING(I)		73	PIN, SHAFT	
20	CLIP PISTON PIN		74	SEAL, OIL	
21	PIN, PISTON		75	Rocker shim	
22	PISTON		76	SHAFT, GOVERNOR ARM	
23	FLG.BOLT M6X12	M6x12mm	77	IGNITION COIL	
24	AIR GUIDE LOWER		78	FLG.BOLT M6X29	M6x29mm
25	RING SET, OIL		79	Wire clip	
26	RING, THE SECOND		80	FAN COVER COMP	
27	RING, THE FIRST		81	NUT, shaft	
28	GASKET, CYLINDER HEAD COVER		82	PULLEY,STARTER	
29	COVER SUBASSEMBLY, CYLINDER HEAD		83	SHEATH,WIRE	
30	BOLT		84	COOLING FAN	
31	Exhaust valves stud bolt		85	FLYWHEEL COMP	
32	BREATHER TUBE		86	GRIP,STARTER	
33	FLG. BOLT M10X80	M10x80mm	87	FLG.BOLT M6X8	M6x8mm
34	ROTATOR, VALVE		88	CASE COMP,RECOIL STARTER	
35	NUT, VALVE LOCK		89	SPRING,STARTER RETURN	
36	NUT VALVE ADJUSTING		90	CORD	
37	ROCKER, VALVE		91	PULLEY,RECOIL STARTER	
38	SPARKPLUG		92	SPRING,PATCHET	
39	RETAINER, INTAKE VALVE		93	PATCHET,STARTER	
40	RETAINER, EXHAUST VALVE		94	PAWL GUIDE	
41	SPRING,VALVE		95	CLIP SPRG.,PAWL GUIDE	
42	BOLT, VALVE ADJUSTING		96	SCREW,PAWL GUIDE	
43	OIL SEAL, VALVE		97	BUSHING, GOVORNER GEAR	
44	RETAINER, VALVE		98	CLIP, GOVORNER GEAR	
45	PLATE SUBASSEMBLY, LIFTER STOPPER		99	GEAR, GOVERNOR	
46	HEAD SUBASSEMBLY, CYLINDER		100	INNER WASHER,GEAR	
47	VALVE,IN.TAKE		101	GOV.,CEAR SHAFT	
48	VALVE, EXHAUST		102	GSKT.,EXT.	
49	PUSH ROD		103	Lock WASHER	
50	TAPPET, VALVE		104	Recoil Starter Set	
51	Locating Pins(φ12x20)	φ12x20mm	105	Governing Gear Set	
52	GASKET, CYLINDER HEAD		106	Air Cleaner Set	
53	AIR cleaner holder		107	Carburetor Set	
54	NUT M6	M6	108	Piston Rings Set	
55	STUD, INTAKE		109	Gasket Set	